

Sculpture in the City

11th Edition

City Arts Initiative
April 2022



SCULPTUREINTHECITY

SCULPTURE IN THE CITY

Partners



Bloomberg

Brookfield
Properties



LONDON & ORIENTAL

nuveen
REAL ESTATE



22 BISHOPSGATE

Patrons

Leadenhall Market | MTEC | PLP/Architecture | Price & Myers

Artwork Map



New Artwork



Remaining Artwork



Permanent Artwork

Artists

1. Alice Channer
2. Emma Louise Moore
3. Victor Seaward
4. Mike Ballard
5. Ollie Bragg
6. Ugo Rondinone
7. Sarah Lucas
8. Eva Rothschild
9. Emma Smith
10. Claudia Wieser
11. Shezad Dawood
12. Guillaume Vandame
13. Bram Ellens
14. Jun T. Lai
15. Jesse Pollock
16. Pedro Pires
17. Victor Seaward
18. Jocelyn McGregor
19. Bosco Sodi
20. Elisa Artesero



Artworks Remaining for the 11th Edition



Alice Channer, *Burial*
St Botolph w/o Bishopsgate



Bram Ellens, *Orphans*
Cullum Street



Eva Rothschild, *Cosmos*
Undershaft (next to Aviva)



Jun T. Lai, *Bloom Paradise*
Fenchurch Street Station Plaza



Mike Ballard, *Rough Neck Business*
100 Bishopsgate



Guillaume Vandame, *symbols*
Leadenhall Market

Artwork Acquisitions

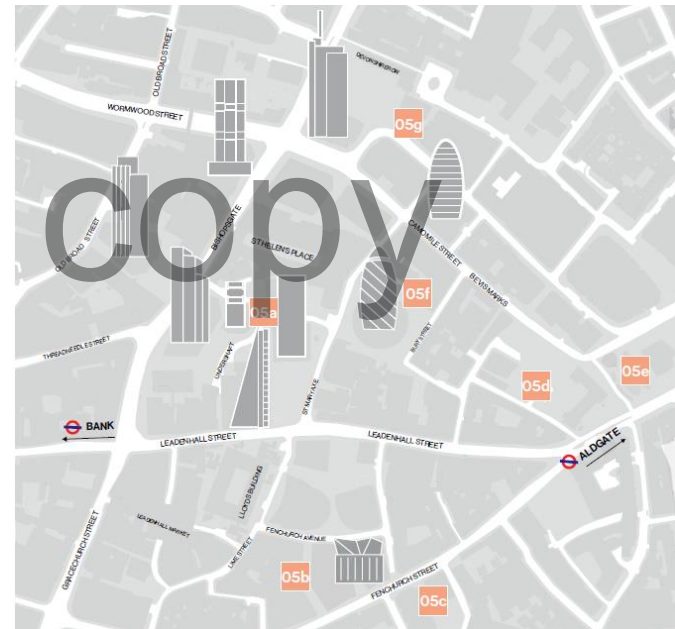


Elisa Artesero, *The Garden of Floating Words*
Purchased by Nuveen, 2021



Oliver Bragg, *In Loving Memory*
Acquisition by SITC, 2022

10 bench plaques across 7 locations:



Aldgate Square Commission

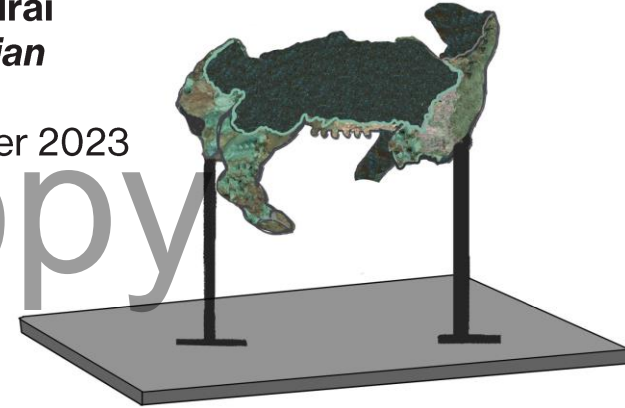
Jocelyn McGregor
Earthing

12 May 2022



Emii Alrai
Guardian

Summer 2023



Key Dates

January – April 2022

Fabrication of *Earthing*

07/08 May 2022

Install Jocelyn McGregor's *Earthing*

12 May 2022

Private Launch of Jocelyn McGregor's *Earthing*

Summer 2023

Launch Emii Alrai's *Guardian*

New Artworks



Emma Louise Moore

Title		Miss
Artist		Emma Louise Moore
Date		2021
Material		Marble
Dimensions		150cm high x 100cm x 70cm (x 2 pieces)
Weight		1.5 ton, 2.1 ton
Location		United Kingdom



Title	Nest series
Artist	Victor Seaward
Date	2021
Material	Enamel on 3D printed PETG
Dimensions	approx 30 x 20 x 20 cm
Weight	
Location	United Kingdom

Note:

This is a new series proposed for Sculpture in the City.

Victor Seaward – *Brooke Benington*



Title	summer moon
Artist	Ugo Rondinone
Date	2011
Material	Cast aluminium, white enamel
Dimensions	600 x 550 x 550 cm
Weight	1400 kg
Location	United Kingdom

Ugo Rondinone – *Sadie Coles HQ*



Title		Sandwich
Artist		Sarah Lucas
Date		2011-2020
Material		Concrete
Dimensions		63 x 243 x 190 cm
Weight		2500 kg
Location		United Kingdom



Sarah Lucas – *Sadie Coles HQ*



Title | We

Artist | Emma Smith

Date | 2019

Material | Neon

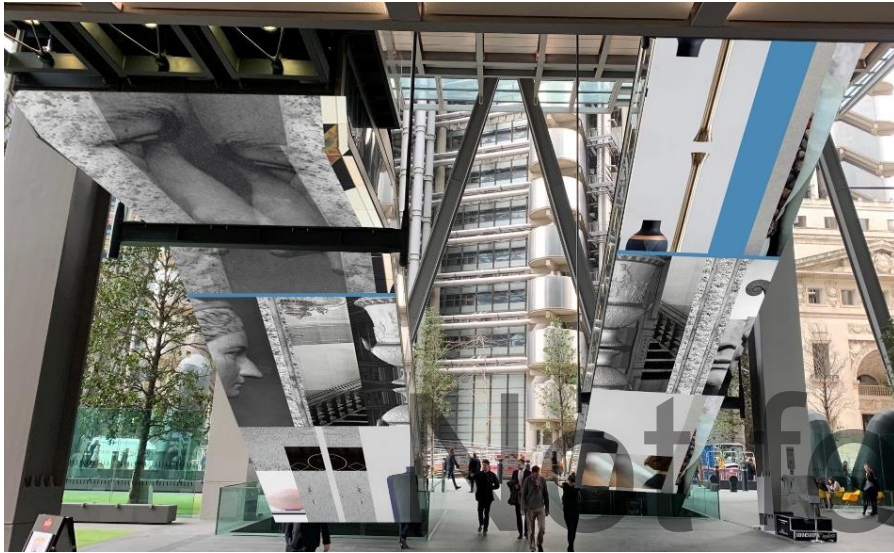
Dimensions | 450 x 230 cm

Weight | 226 kg

Location | United Kingdom



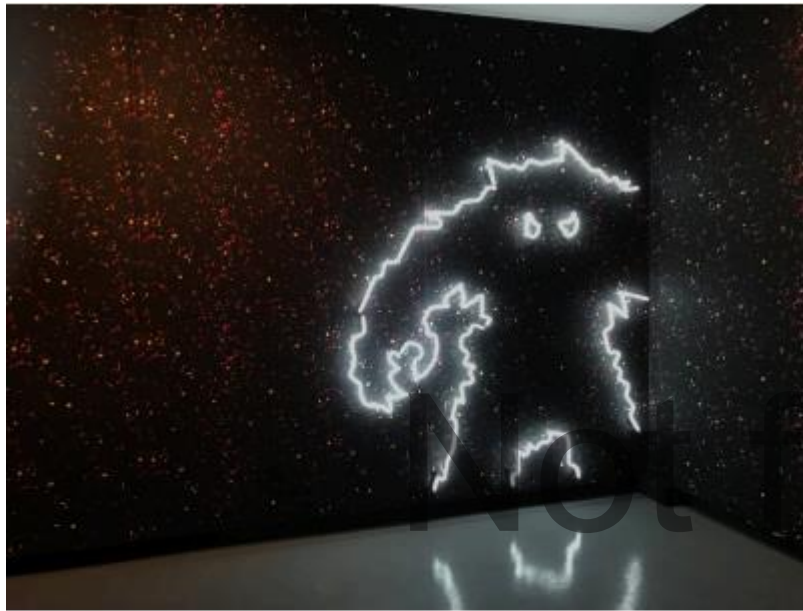
Emma Smith



Title	Generations (Part 2)
Artist	Claudia Wieser
Date	2021
Material	Vinyl
Dimensions	Variable
Location	London



Claudia Wieser – *Sies + Höke Gallery*



Title	Invasion
Artist	Shezad Dawood
Date	2019
Material	Neon
Dimensions	198 cm x 186 cm
Location	London



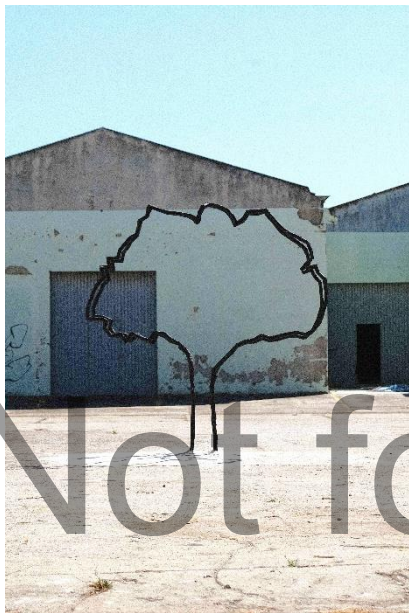
Shezad Dawood – *Timothy Taylor*



Title	The Granary
Artist	Jesse Pollock
Date	2021
Material	Powder-coated Steel
Dimensions	353 x 205 x 210 cm
Weight	600 kg
Location	United Kingdom



Jesse Pollock – *Bold Tendencies*



Title		Habitat
Artist		Pedro Pires
Date		2021
Material		Metal
Dimensions		70 x 265 x 250cm
Weight		280 kg with metal base 130 kg without metal base
Location		Portugal

Pedro Pires



Title		Untitled
Artist		Bosco Sodi
Date		2014
Material		Bronze
Dimensions		2.8m tall / 1m base diameter
Weight		
Location		USA

Bosco Sodi – *Koenig Galerie*

11th Edition Programme

Not for copy

Not for copy

Education Workshops

- Working with artists, architects, and partner company volunteers, around **200 students** from **9 local schools** will participate in a total of **36 workshops**.
- The workshops will be **split between summer and autumn term** following consultation with the teachers, with the ability to incorporate the activities into their overall lesson plans.

Education Workshops 1&2

27-30 June,
1, 4-8 July

Education Workshops 3&4

26-30 September,
3-7 October



Bloomberg Connects App

Enhancing visitor experiences with a new phase of the Sculpture in the City multimedia guide.

- New **audio tracks by 11th edition artists** to form a narrated self-guided tour of the sculpture trail
- A unique audio feature **highlighting the Aldgate Square Commission** process and its significance for both Jocelyn McGregor and local community.
 - Including audio tracks by Jocelyn McGregor, Aldgate Connect BID, City of London Outdoor Arts Programme and SITC Arts Advisory Group

The new phase of SITC's guide on Bloomberg Connects will launch **June 2022**

Hear the stories behind Sculpture in the City.

Explore the 11th edition through exclusive artist commentary and an immersive Family Trail tour narrated by Martha Howe-Douglas of Horrible Histories in our free mobile guide on Bloomberg Connects.



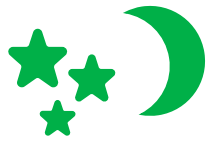
Scan to download the free app.

Bloomberg
Connects



Nocturnal Creatures

Sculpture in the City is once again an associate programme partner with **Whitechapel Gallery**.



23 July 2022

Host of an exciting programme of installations, performances, music and film to activate the 11th Edition artworks during the late-night festival.

In 2021:

2,300+ overall attendance

630+ SITC participants

**The 2021 event was a Covid-safe programme. The 2019 programme saw 8,000+ overall attendance and 2,000+ participants at SITC events*



Key Programme Dates

10th Edition Deinstalls

23 April – 8 May

Aldgate Sq Commission Install

7 May

Aldgate Sq Commission Launch

12 May

11th Edition Installs

28 May – 19 June

11th Edition Press Launch

TBC 21 June

11th Edition Private Launch

TBC 23 June

Education Workshops 1&2

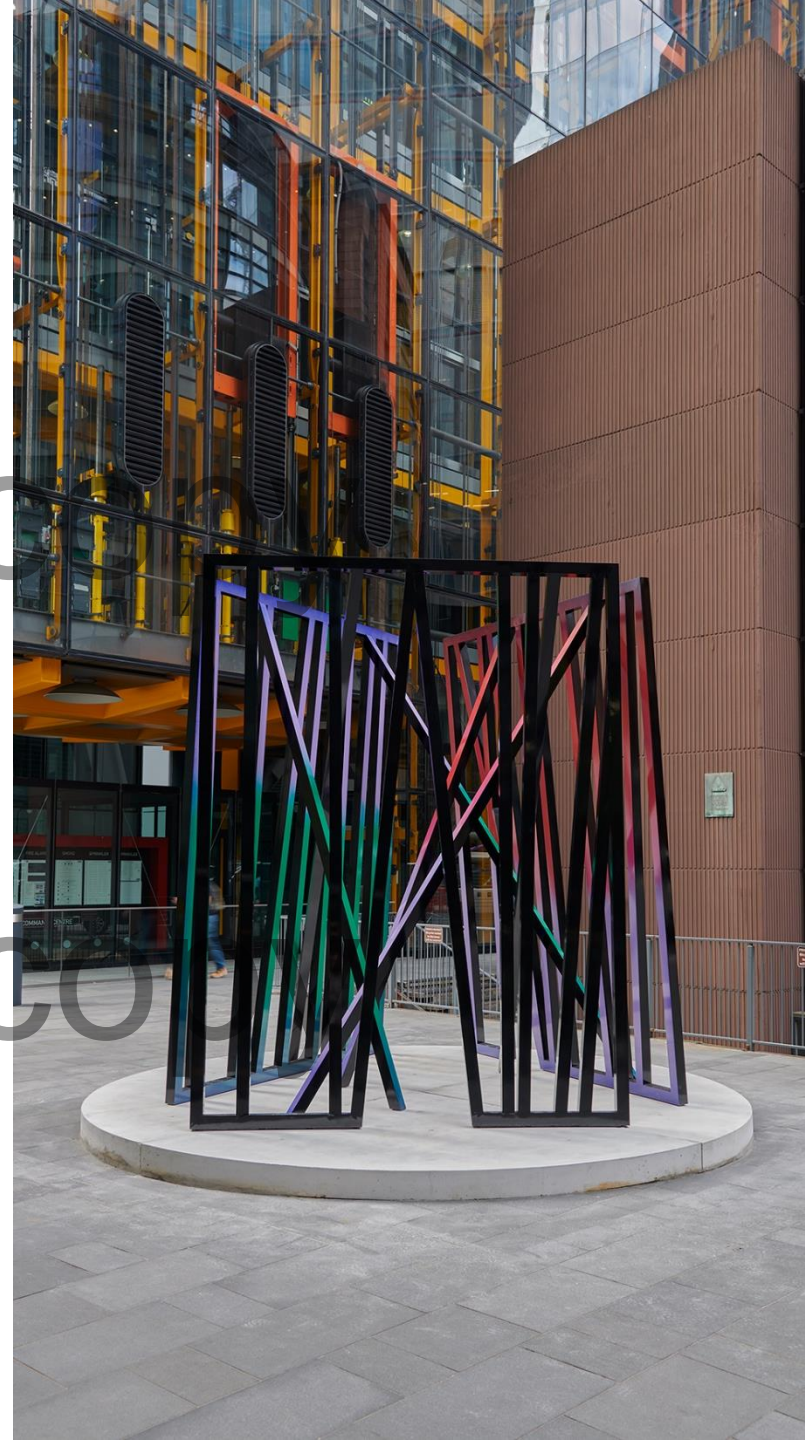
27-30 June, 1, 4-8 July

Nocturnal Creatures

23 July

Education Workshops 3&4

26-30 September,
3-7 October





SCULPTUREINTHECITY



MOBILE ARBORETUM

WAYWARD

THE PROPOSAL

THE MOBILE ARBORETUM

The project is inspired by the collective history of the market. Both sites have been or still are hubs of activity and trade in London from the medieval produce and poultry markets of Cheapside to the buzzing fabric markets of Petticoat Lane.

Markets are full of brimming barrows and carts, overflowing with produce, delicate frames hung with drapes of fabric, pinstriped and patterned canopies that shelter the people of the market. Food and fabrics mingle with entertainment, music, trade and conversation of mingling communities.

When thinking about this project we knew we wanted to play with the idea of an urban forest but it needed to be more than mere planters. It had to reflect the sites history and be a part of its present.

This brings us to the Mobile Arboretum - a series of “carts” or “barrows” filled with saplings to create this new home for trees. The barrows will house the trees/saplings over the summer, taking care of them until it is time to move them on to their new homes helping to see the legacy of a real urban forest at schools and community gardens in and around the area.



Medieval market barrows



Medieval patterns



The Aldgate



Medieval market barrows - fabric



Petticoat Lane



Seedling

Sapling

Pole

Sawlog



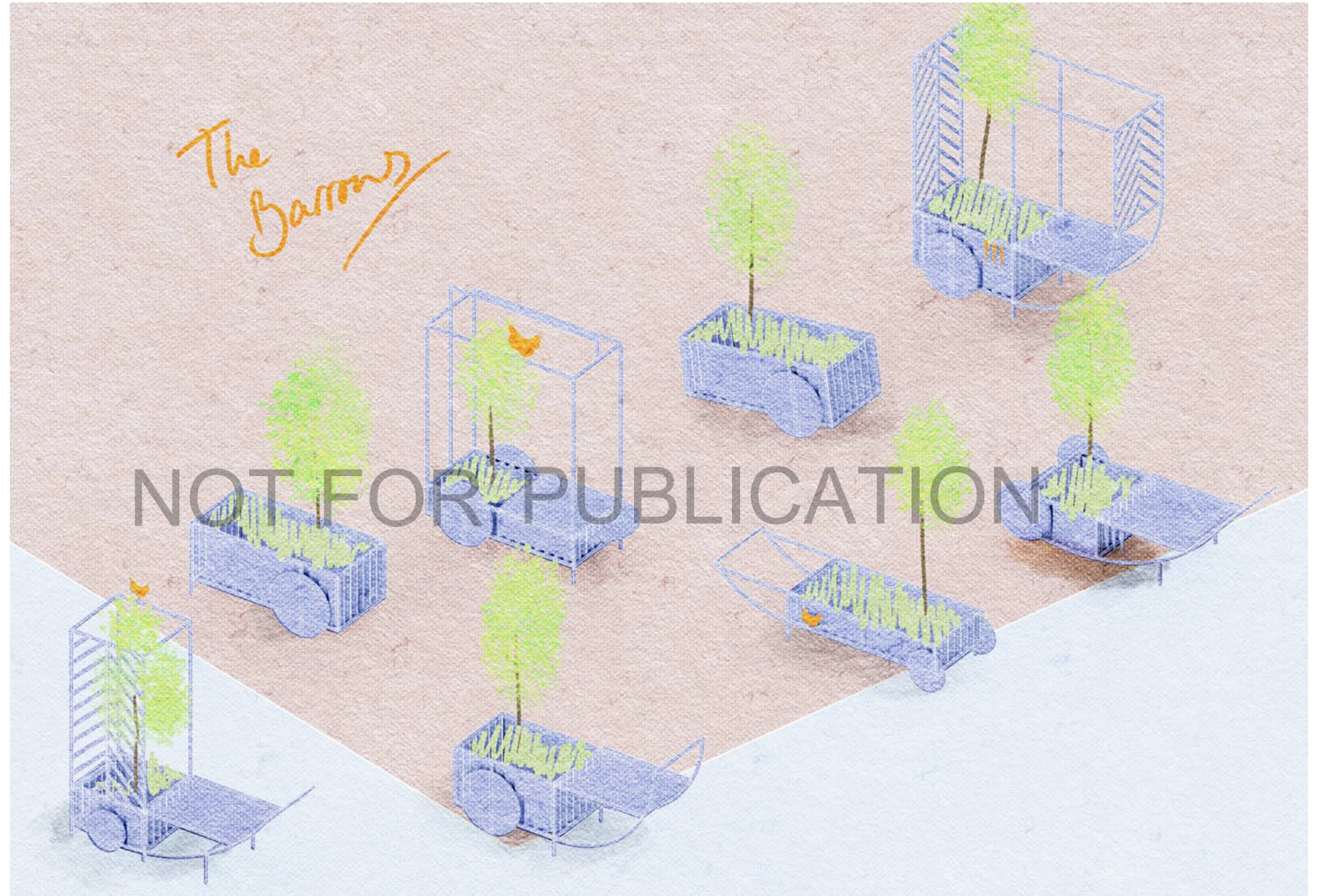
Petticoat Lane



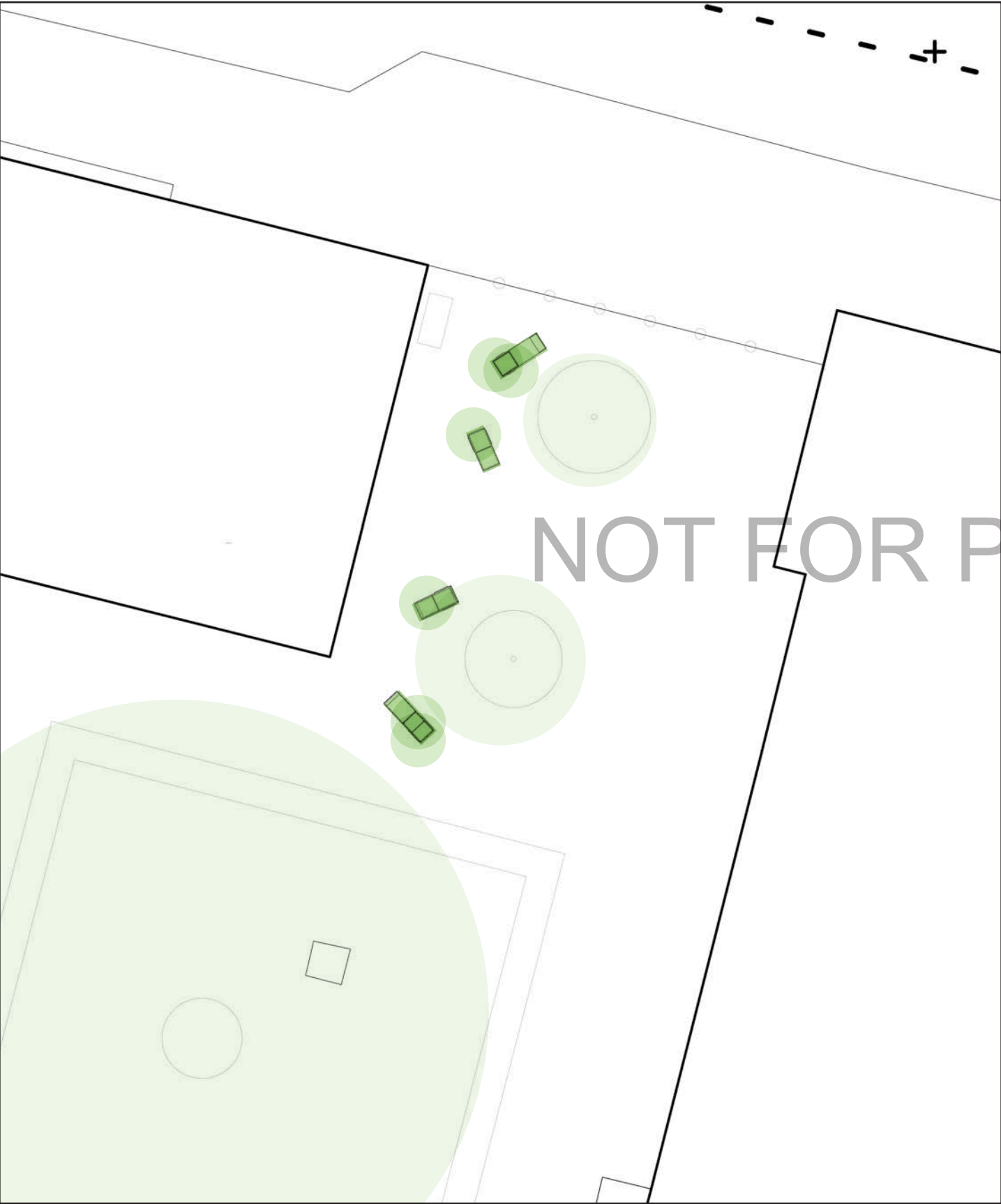
Minstrels at a market

THE BARROWS - a quick breakdown

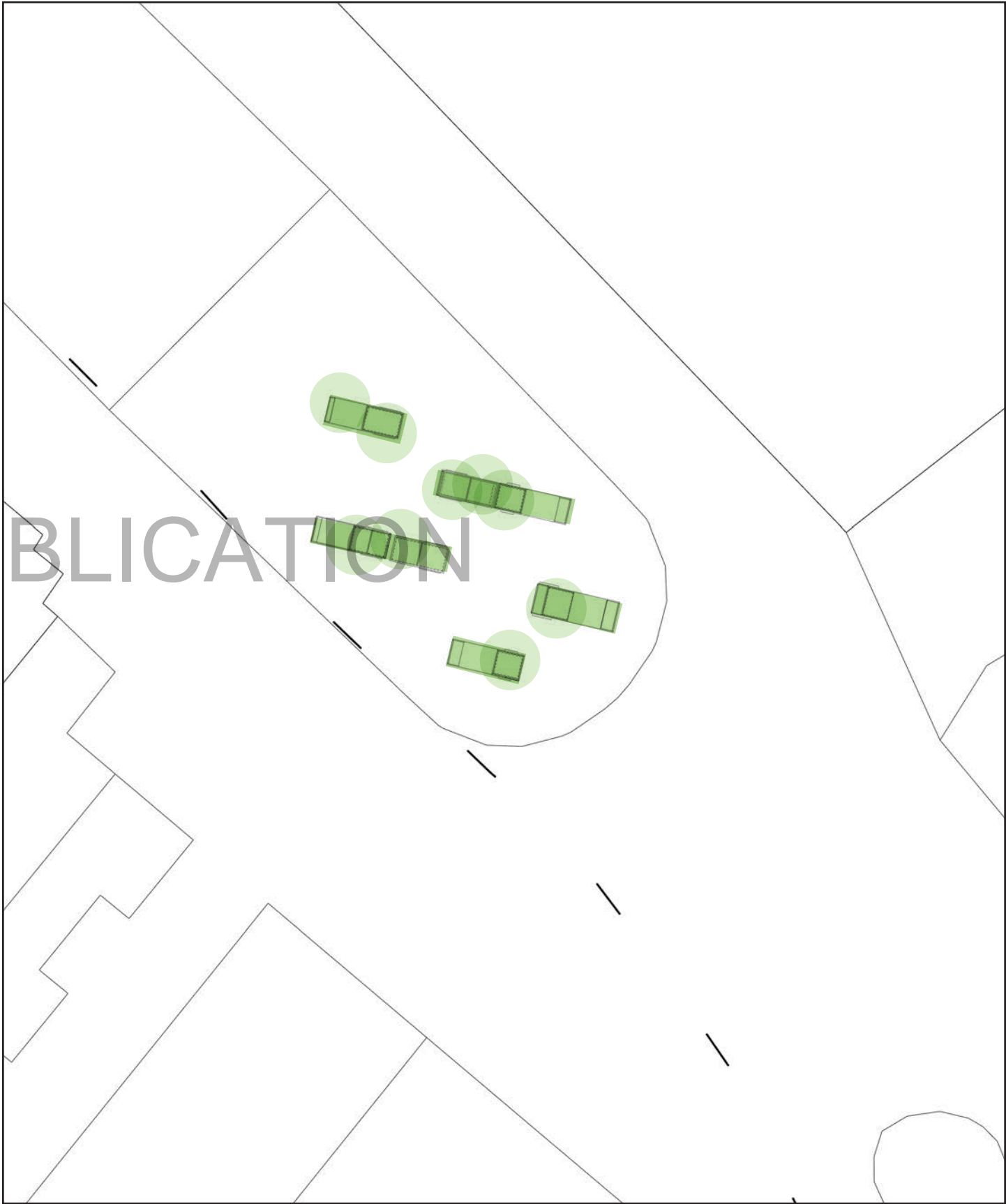
- Barrows would be made of a simple steel frame for durability.
- Wheels are false/a motif and do not allow modules to be moved.
- No module is movable by a single person/ general pedestrian. A pallet truck will be required to move each module.
- No module is fixed into the ground at any point.
- Other materials TBC but we are aiming for durability as well as sustainability to ensure these have a good legacy.
- The barrows exist at a range of heights that allow different users with a range of accessibility to interact with the plants and trees.
- We will be planting with a range of trees, sapling and whips as well to ensure a range of heights and growth.



Bow Church Yard - sketch plan



Middlesex St - sketch plan

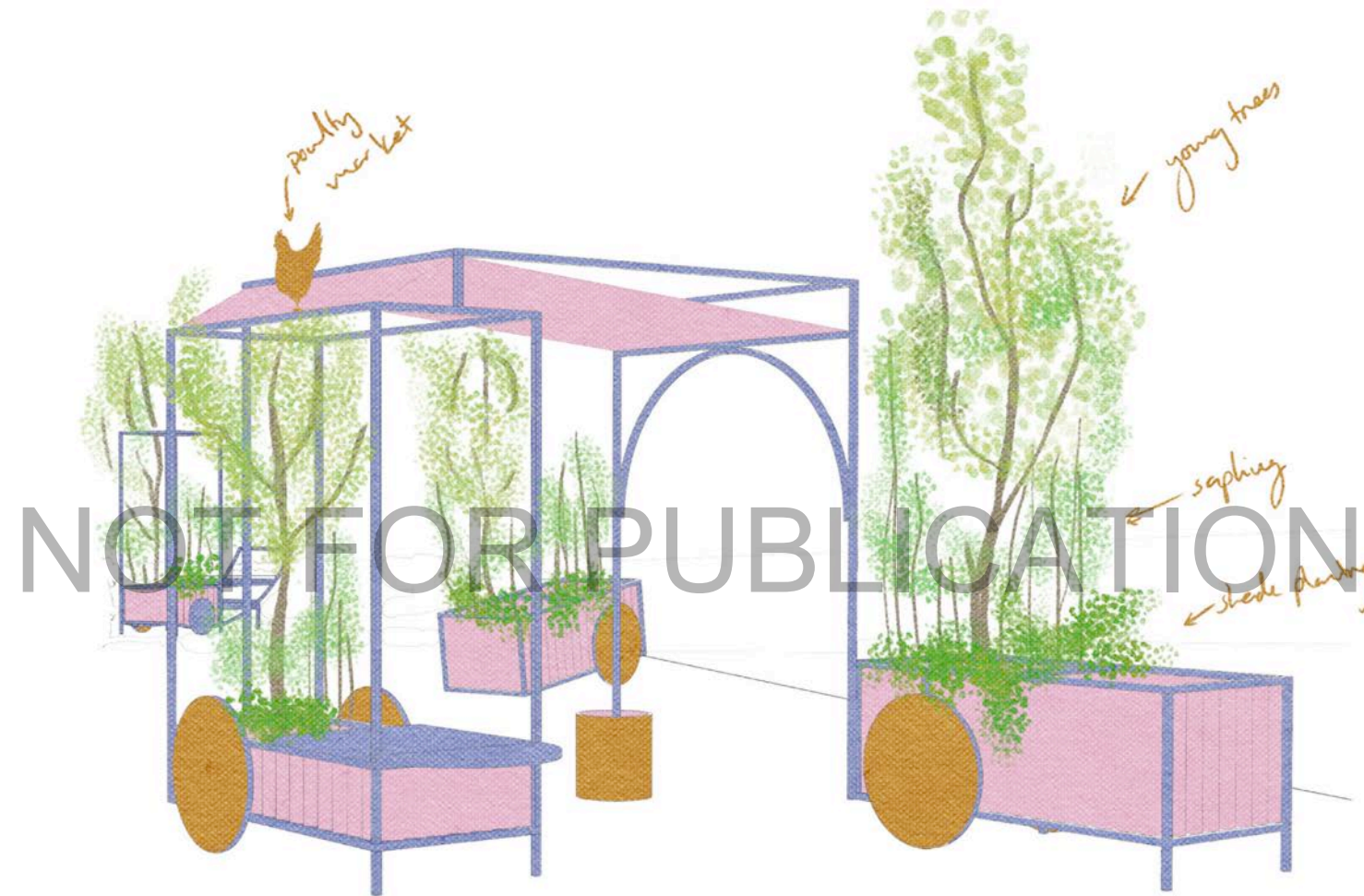


Bow Church Yard - entrance view



Bow Church Yard - the market

There is the potential to be able to provide components to an interested party that would allow them to use the barrows to create a stall.



Middlesex St - view from obelisk



PLANTS

Bow Church Yard

The focus here is for dry shade planting to create a low maintenance but lush atmosphere.



Middlesex St

The focus here is on many types of aromatic rosemary responding to the alfresco eating and good sunshine as well as creating a low maintenance, hardy but immersive scented environment.

